

USER MANUAL-HOW TO CHANGE DEVICE IP

Table of Contents

1 FACTORY IP ADDRESS OF THE DMV DEVICE.....	1
2 ADJUSTING NETWORK PARAMETERS OF THE PC.....	2
3 SETTING THE IP ADDRESS WITH THE NETWORK DEVICE TOOLKIT APPLICATION.....	4
4 SETTING THE IP AND MAC ADDRESS WITH DISPLAY STUDIO APPLICATION.....	5

Document history

Version	Date	Details	Prepared by	Reviewed by	Approved by	Gen. Doc	Issued for
UP1470	21-05-2025		Milica Petrušjević				

1 FACTORY IP ADDRESS OF THE DMV DEVICE

DMV network devices come the following factory IP settings:

Factory IP settings

IP range	172.16.17.000 to 172.16.17.255	172.16.17.xxx, where xxx is the last byte from the device's MAC address (EA). Gen1 Ethernet
IP range	172.16.19.000 to 172.16.19.255	172.16.19.xxx, where xxx is the last byte from the device's MAC address (EA). Gen2 Ethernet
The subnet mask	255.255.0.0	
Gateway	172.16.0.102	

After production, the initial IP address of the device is:

172.16.1x.xxx, where xxx is the last byte from the device's MAC address.

For example. Ethernet Gen1 If the MAC address is 00-06-55-01-25-4A, the initial IP address will be 172.16.17.74

For example. Ethernet Gen2 If the MAC address is 00-06-55-02-25-4A, the initial IP address will be 172.16.19.74

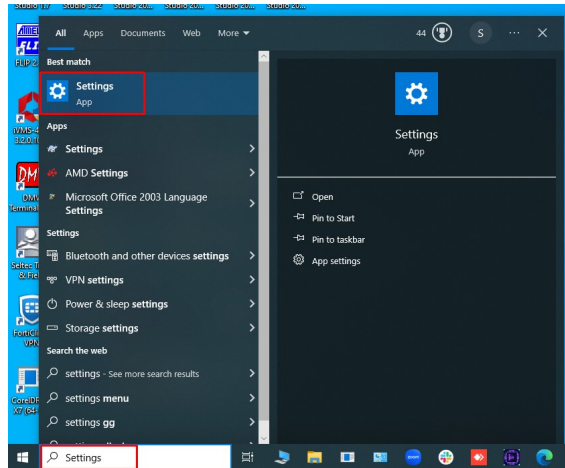
NOTE: The device MAC address can be read on a label on the CPU or device housing

NOTE: Network parameters can be set via the **Network Device Toolkit DMV** or **Display Studio**.

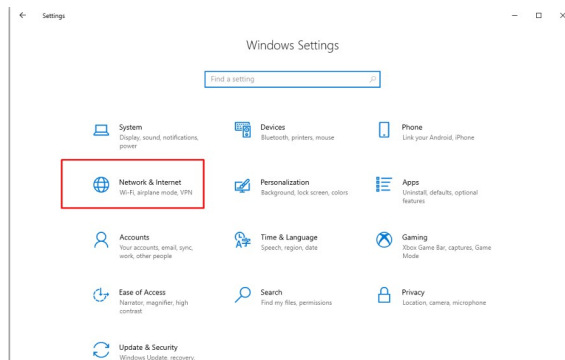
2 ADJUSTING NETWORK PARAMETERS OF THE PC

In order to work with device via Ethernet, PC and device must belong to the same network. Please follow the next steps:

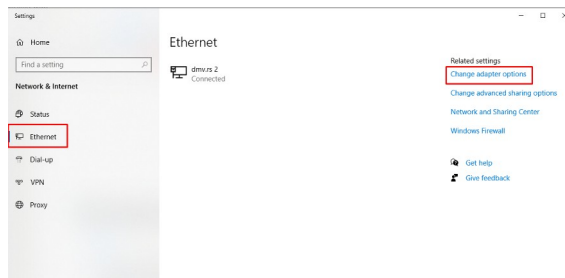
1. Go to Start menu on the PC desktop



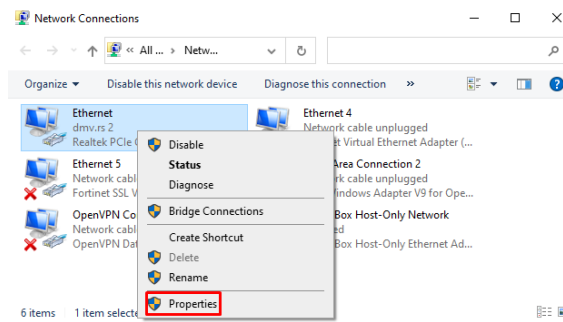
2. Find and open Settings than open Network and Internet



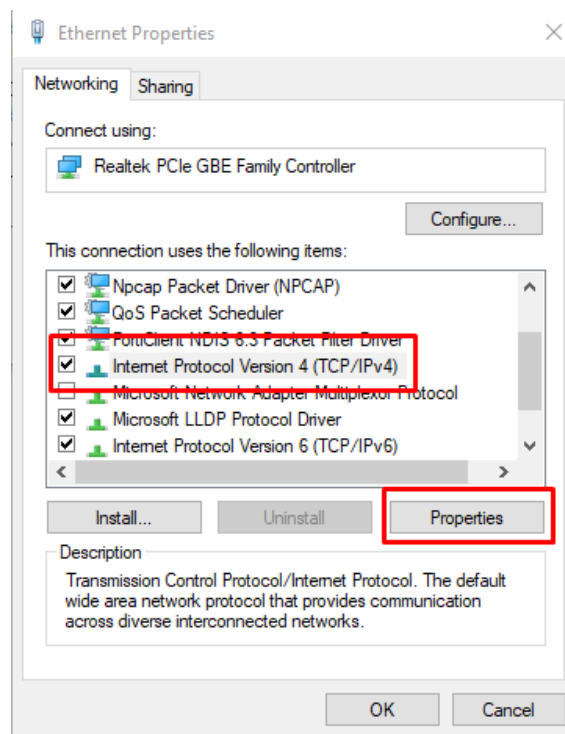
3. Click on Ethernet on the left side, then Click on the Change adapter option on the right side



4. Right click on the appropriate Ethernet adapter, then choose tab Properties



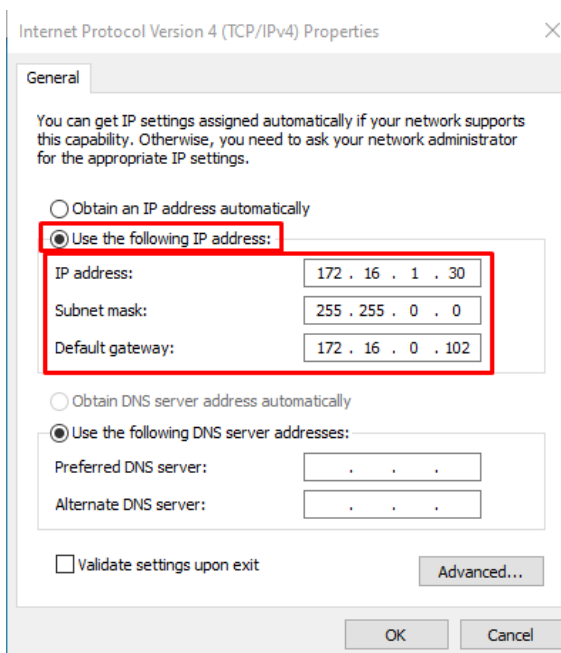
5. Select Internet Protocol Version (TCP/IPv4), then click on Properties



6. Check in the Use following IP address. Set network parameters depending on manufacturer parameters or existing network parameters.

DMV default network settings are

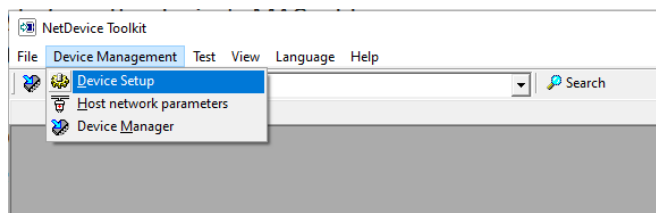
- IP address 172.16.1.xxx
- Subnet mask 255.255.0.0
- Gateway 172.16.0.102



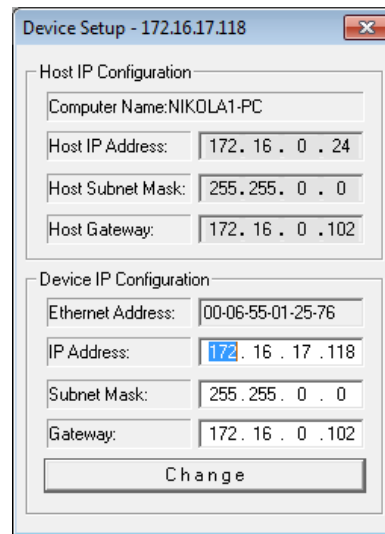
3 SETTING THE IP ADDRESS WITH THE NETWORK DEVICE TOOLKIT APPLICATION

The supplied device needs to be adapted to the network in which will be used. To set up the IP follow the next steps.

1. Start the application **Network Device Toolkit**, it is installed together with the **Display Studio** application.
2. Click on the **Search** button to list available devices
3. In the main menu option **Device Management**, please select **Device Setup**.



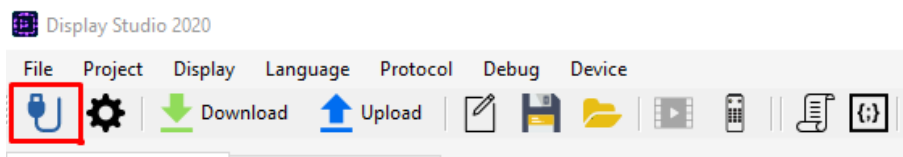
4. It is necessary to change the IP address of the device from the default factory value to the address from the desired network range, the address of the network mask and the IP address of the default gateway within the desired network if the device needs to connect to the Internet.



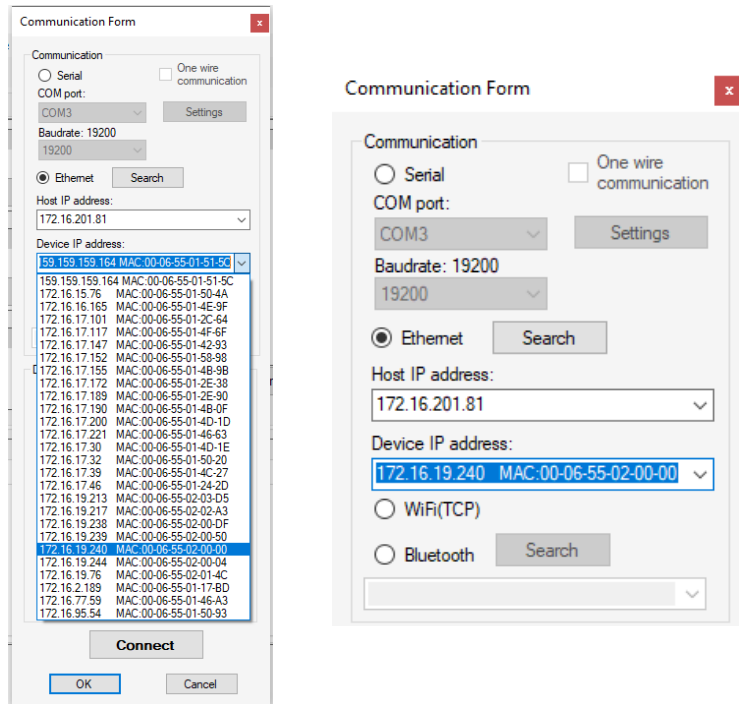
4 SETTING THE IP AND MAC ADDRESS WITH DISPLAY STUDIO APPLICATION

Connect to the device CPU via LAN using the Display Studio by following the next steps:

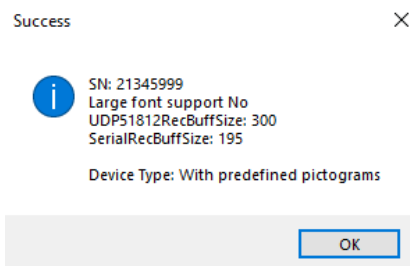
1. Launch the Display Studio application.
2. Select the icon **Connect** button.



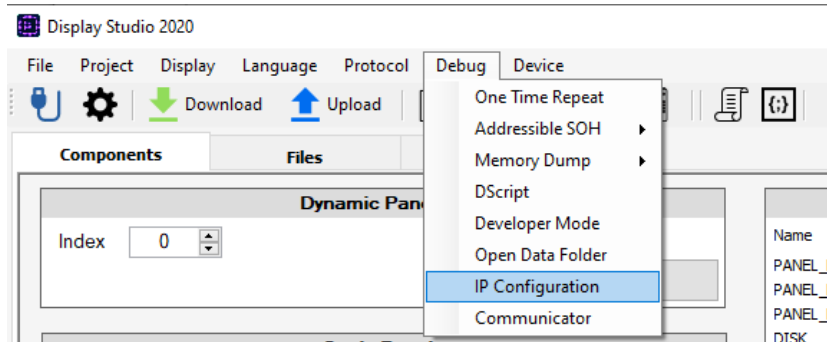
3. The **Communication Form** window will appear.
4. Choose the appropriate communication method, and connect to the device.
Ethernet – first select the **Host IP address**
5. In the **Device IP address** search for devices and after searching choose a device by its IP or MAC address.



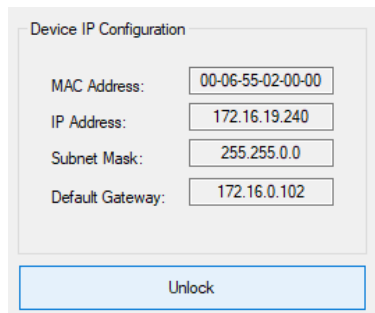
6. When the device is connected the following message will appear



7. Go to main menu in the **Debug** and click on the **IP configuration**



8. The next pop up window will appear and click on **Unlock** to allow to change network parameters



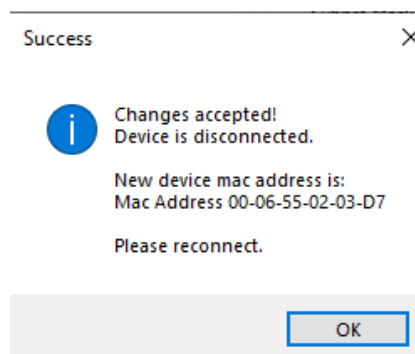
Device IP Configuration

MAC Address:	00-06-55-02-00-00
IP Address:	172.16.19.240
Subnet Mask:	255.255.0.0
Default Gateway:	172.16.0.102

Unlock

9. Change the MAC address according to the label on the CPU (EA: 00-06-55-02-XX-YY) and then click **Save**

10. The following message will appear:



11. Connect to device again, and do the same steps to change the IP address, and the following message will appear.

