

Connecting and changing the display settings on Pharmacy Cross

Table of content

1 INTRODUCTION.....	1
2 CONNECTING VIA COMMAND CONSOLE APP.....	1
2.1 Discovering the device via serial communication.....	2
2.2 Discovering the device via Ethernet communication.....	3
2.3 Connecting with the device.....	3
3 CHANGING THE DISPLAY.....	4
3.1 Changing the text.....	5
3.2 Changing the animation.....	6

Document history						
Version	Date	Description	Pripremio	Pregledao	Odobrio	Gen. dok. Izdato za
UP1469		Prvo izdanje				
UP1505	4.07.2025	Drugo izdanje	M.S. Jovanović			

1 INTRODUCTION

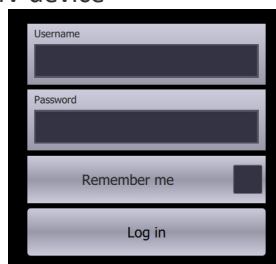
The purpose of this tutorial is to show how to control and operate the DMV device, using the free Command Console application. The application communicates directly with the device so the user must be at the location of the device. Currently supported platforms are Android and Windows. A Command Console for Windows is sent with the device or can be obtained from the manufacturer (DMV)

2 CONNECTING VIA COMMAND CONSOLE APP

The connection between the computer and the pharmacy cross is usually done via RS-232 serial connection, using USB to RS232 cable supplied with the cross, or via an Ethernet connection. To change the display on the pharmacist's cross, it is necessary to use the Command Console application.

After starting the application, a window will appear as in the picture.

NOTE: Before starting to work with the application, it is necessary to request username and password from the manufacturer or distributor of the DMV device



When starting the Command Console for the first time, it is necessary that the computer has internet access so that all the techniques and other files, necessary for working with the devices, can be downloaded from the Cloud server.

After successful login, the main menu with three sections will appear:

- My Devices
- Add Device
- Settings

NOTE: If we are working with the device for the first time, it is necessary to add the device first, in the "Add device" section.

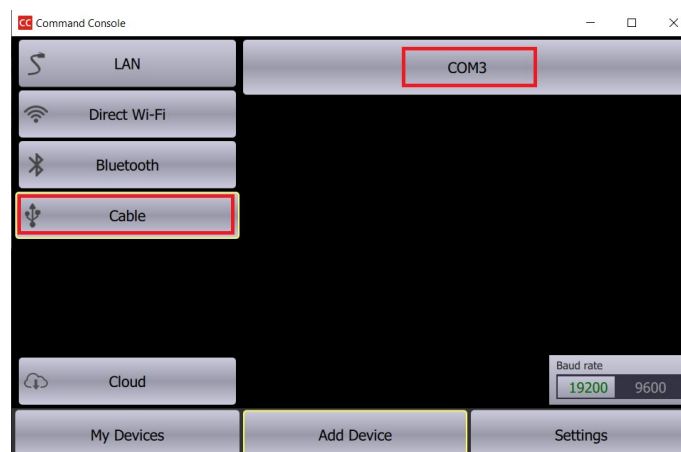
2.1 Discovering the device via serial communication

Pharmacy crosses usually use serial, that is cable connection, serial/USB cable is required to connect to the computer.

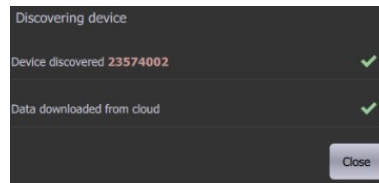


The following steps are required to connect:

- Select Add device
- then select Cable
- Select the address of the device, correct COM port



If the connection is successful, a message will be displayed



The device will be shown in the My Devices section.

NOTE: The Internet is only required when connecting to the device for the first time via serial communication. Every next connection to the same device does not require Internet access.

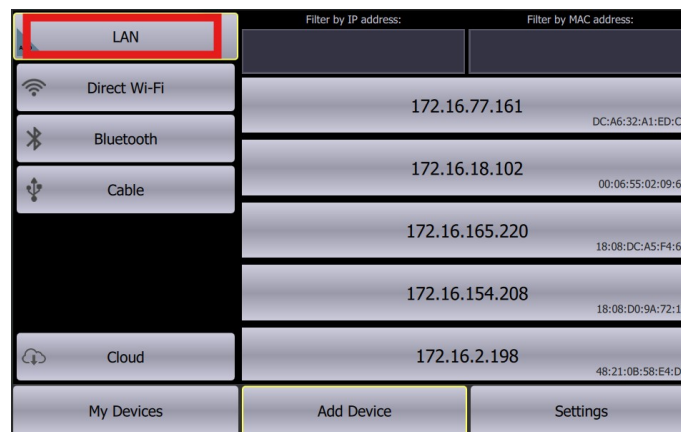
NOTE: When a device is detected via a specific serial COM port, use the same COM port the next time it is connected, the device will need to be rediscovered

2.2 Discovering the device via Ethernet communication

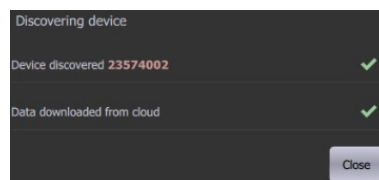
Please refer to the UP1470 manual for changing the IP address of the device. In order to connect to the device, the device needs to be in the same LAN network as the computer/tablet. The network parameters of the device and computer (IP addresses, Subnet Mask and Gateway addresses) must be set.

Steps to connect:

- Connect the device to the LAN network where the computer is located
- After connecting to the Internet, select Add device → LAN in the main menu, the IP and MAC addresses of devices connected to the local network will appear



- By selecting the IP/MAC address, connect to the device and if the connection is successful, a message will appear that the device has been detected.



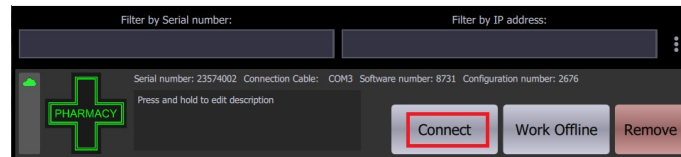
2.3 Connecting with the device

Each detected device will be displayed in its own field in the My Devices section. The device field contains the following data:

- Device icon,

- Device serial number, connection type and address, software number and configuration
- Field for a free description of the device
- Connect button (connection to device and access to device techniques)
- Button Remove (delete the device from the list).

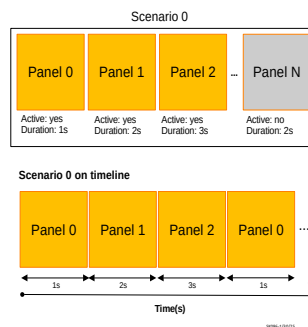
Click the Connect button to connect to the device.



3 CHANGING THE DISPLAY

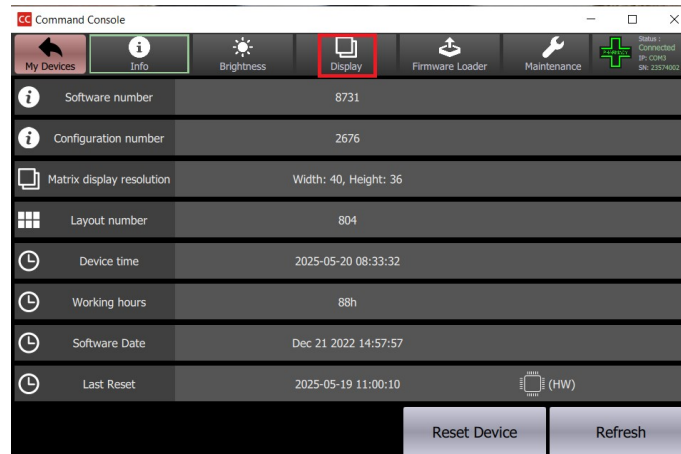
A scenario is a display setting that corresponds to the real situation on the device. One or more scenarios can be defined in the device, each scenario can have one or more panels. Panels should be viewed as one static image on the device's display. Panels can be included or excluded from the scenario. In the active scenario, only the included panels are displayed.

The panels of the selected scenario are displayed cyclically on the screen, one after the other. The arrangement of panels by scenarios, the number of panels and scenarios is set in the factory.



Depending on the type of device, the following can be placed in the panel: image, animation, text, date, time... In the Display technique, scenarios and panels can be seen, i.e. the number of panels in each scenario. The Display technique helps to save scenarios in advance, that can be easily activated later if needed. Panels can be turned on or off via the Panel Activation button. The duration of the panel is set in seconds.

Clicking on the "Display" button takes you to the technique that allow changing the display.



3.1 Changing the text

Panel settings are made via the Edit button.

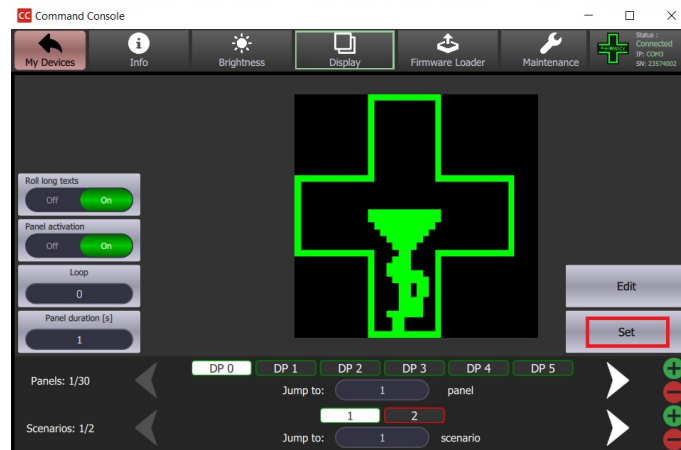


On the left are the current settings of the panel. On the right at the bottom of the screen there are commands for adding and deleting media, images, animations, text, date and time.

To add new text, select the Text button. By selecting existing, the current text can be deleted and new text entered.

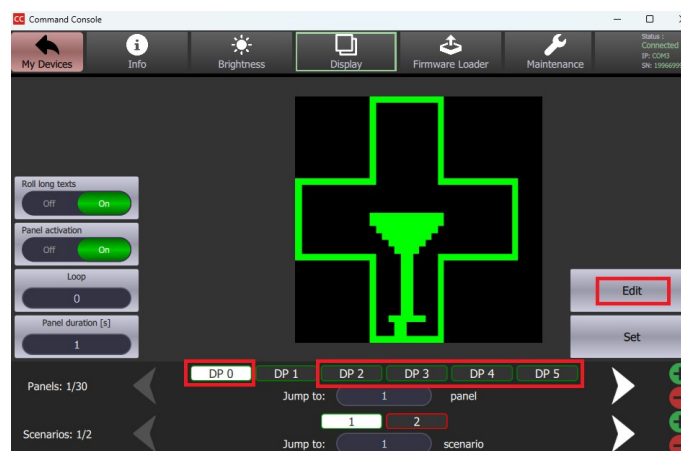


The text box also allows changing the font, adjusting the spacing between characters and positioning text. To confirm the settings, click the OK button, and to save to the device, select the Set button

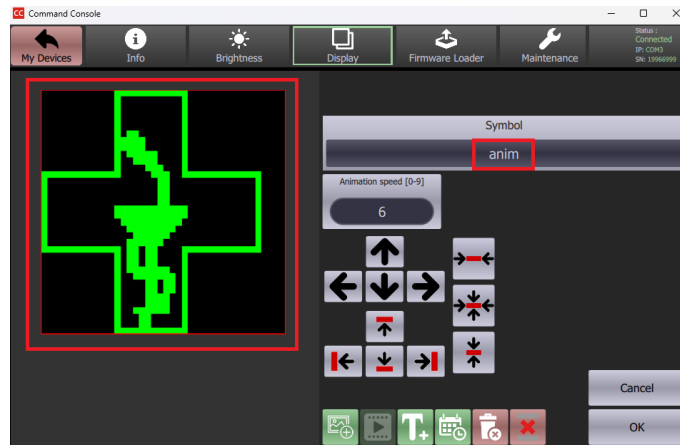


3.2 Changing the animation

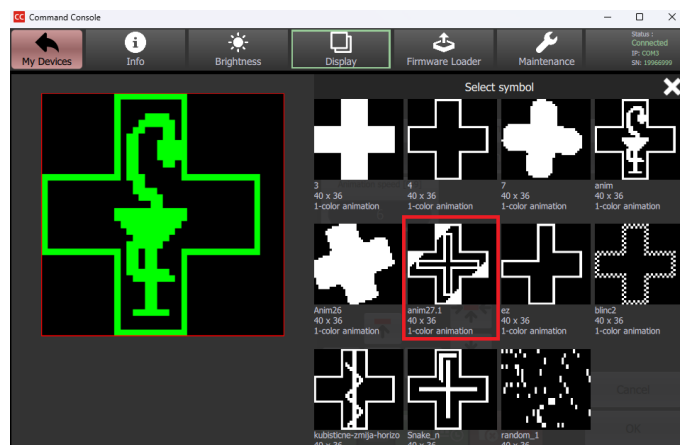
Panel settings are made via the Edit button.



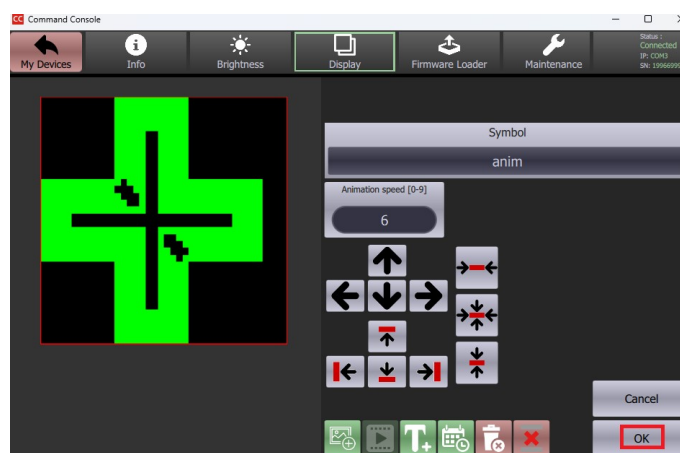
Adding an animation to the panel is done by selecting the Animations button.



This opens a window with available animations.



By selecting one, an animation will appear on the panel field. By selecting an animation, the options for setting the display will appear on the right side: animation selection, animation speed and positioning. Animation speed allows you to set the animation speed in the range 0-9, 0 being the slowest speed.



To confirm the settings, click the OK button, and to save to the device, select the Set button.

