

# General installation instructions for DMV VMS Transilluminated

## Document history

Version	Date	Details	Prepared by	Reviewed by	Approved by	Gen. Doc	Issued for
UP1528	03-09-2025	First edition	M. S. Jovanović				DMV

## 1 MECHANICAL INSTALLATION

### Warnings



Only qualified and authorized staff shall do installation, maintenance, and service work.



Use proper tools for connection and maintenance of the device.



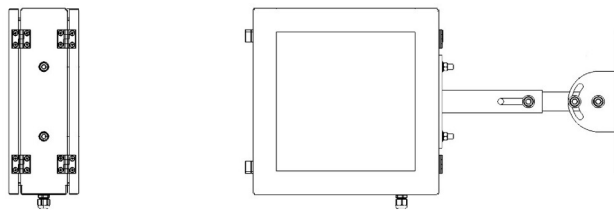
When mounting the sign on the carrier construction, ensure a stable carrier construction.

DMV devices must be installed on a structure designed to withstand wind loads, seismic events, the weight of ice in the winter, or any other load the structure might bear. The structure must comply with all national and local codes. Because every sign installation is unique, there is no single procedure for mounting the signs.

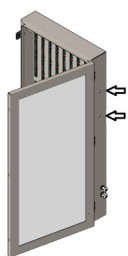
**NOTE: Carefully read this manual and follow the instructions before the installation.**

### 1.1 Mounting of a double sided device

- The device can be mounted on a carrier or directly on a wall.

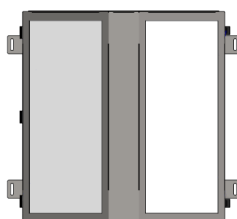


- Place the screws inside the holes intended for mounting.
- Secure the device in its final position and tighten the fastening screws.

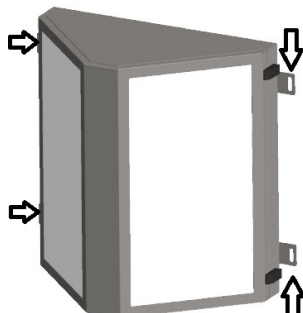


### 1.2 Mounting of a “Butterfly” device

- The device can be mounted directly on a wall.

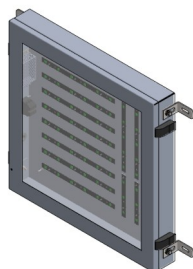


- Place the screws inside the holes intended for mounting.
- Secure the device in its final position and tighten the fastening screws.

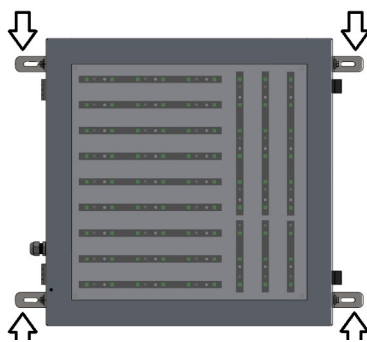


### 1.3 Mounting of a one side device

- The device can be mounted directly on a wall.



- Place the screws inside the holes intended for mounting.
- Secure the device in its final position and tighten the fastening screws.



## 2 ELECTRICAL INSTALLATION

### Installation warnings



Carefully read the instructions for installation before plugging in the device.



While closing the device's door, be careful not to pinch the cables and press the door for easier locking.



The device must be connected to a grounded electrical socket.

**NOTE:** All cables should enter the device through cable glands on the housing's back. There are usually two glands, one for the main supply cable and the other for a communication cable.

### 2.1 Connecting devices with one PSU

- Insert the main power supply cable (230VDC) through the gland.



- Connect the phase, neutral, and earth (ground) on marked clamps.

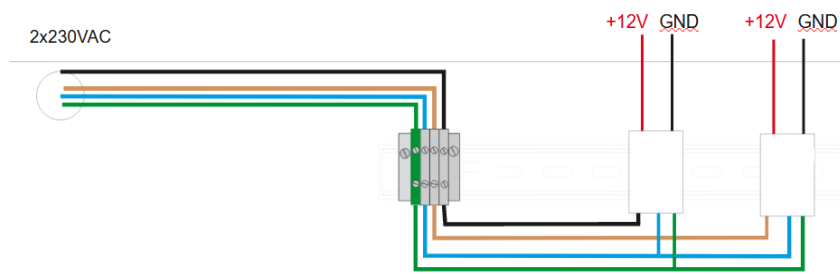
**NOTE: Only a trained person should attach wires to the terminals.**

## 2.2 Connecting devices with two PSUs

- Insert the main power supply cable (230VDC) through the gland.



- Connect the phase, neutral, and earth (ground) on marked clamps.



**NOTE: Only a trained person should attach wires to the terminals.**